

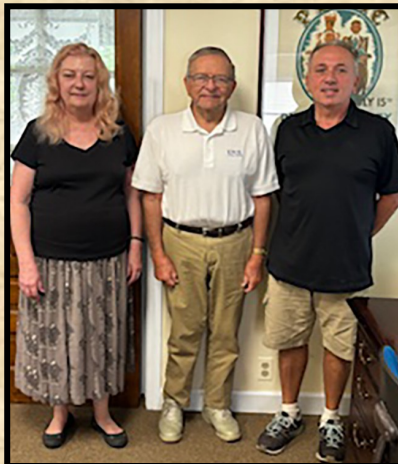


Official publication of the
Roselle Historical Foundation
39 East Elm Street, Roselle, IL 60172-2026
(630-351-5300)
Email: museummanager@rosellehistory.org
Facebook: <https://facebook.com/>

CONGRATULATIONS!

The Roselle Historical Society Board of Directors held annual elections of officers and new board members on July 13.

Happy to announce Glenn Spachman was elected to the office of President of the Board and Tim Grasso was elected to the Vice-President position. We also welcomed Mickey Molnaire as a new member of the museum board.



Pictured from left:
Mickey Molnaire, new board member;
Glenn Spachman, new President;
Tim Grasso, new vice-president



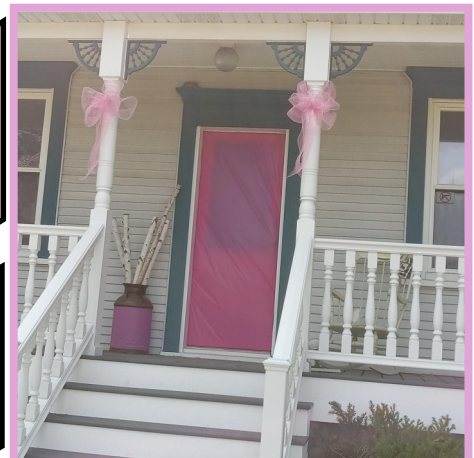
BOARD OFFICERS

Pictured from left: Jeff Engel, Treasurer;
Mickey Molnaire, Secretary;
Glenn Spachman, President;
Tim Grasso, Vice-President



We now have a "little library" outside of the museum! Stop by to grab a book or donate a book. Visit us during docent hours Sundays from 2-4

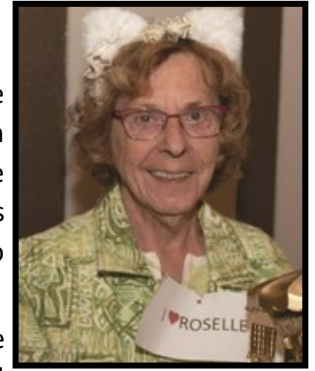
Sumner House pink front door proudly displaying support for the "Petal Promenade Path"



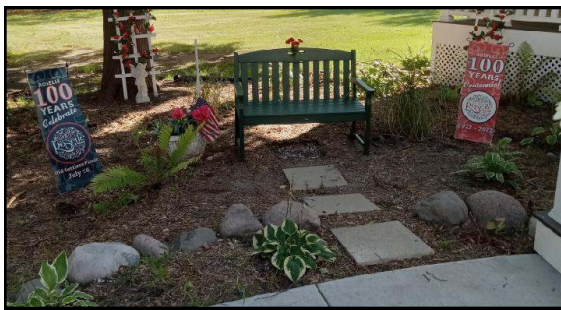
Marketing Manager's Corner

Marketing Manager's Corner: In Memoriam.....

Recently in Roselle, we experienced the loss of someone who was a fixture of the community: Maryann Grygiel. Maryann dedicated her life to serving and helping others with a variety of organizations, causes, and events. Her impact on the community was immeasurable, and may have encouraged so many groups to "get things done"! Though we will miss her dearly, we are grateful for the goodness she shared with so many and her sheer determination to make her community and the world a better place.



A new memorial garden was recently christened on RHM's campus to honor longtime museum member Hank Kvintus. Lake Park student Anthony Johnson planned and constructed the garden over the summer as a project for Eagle Scout Troop 95. The space is a fond tribute to Hank, who nurtured a love for gardening over many years.



In mid-August, family and friends of Hank gathered with the Museum and Green Roselle to celebrate the dedication of his garden and bench on the museum campus. Hank was a director at the RHM. We thank Anthony and all those who helped create this beautiful tribute to Hank for their dedication to the project! We invite anyone in the community who knew and loved Hank to visit and enjoy this garden in his honor. Hank was not only a driving force and dear friend to the museum, but many other Roselle groups as well.

We have also recently said goodbye to several Roselle residents who will be missed by their community. **Linda Johannes** was a longtime museum member and supporter. She passed away on July 20. **Carol France**, founder and dedicated volunteer of the Kiwanis Club of Roselle/Bloomington, passed away on July 21. She called Roselle home since 1983 and loved seeing how the town progressed over the years. And, **Lewis Kortas**, a resident of Roselle for 22 years, passed away on August 2nd. He was active in the American Legion Post 1084 as an SAL member. May all of their memories be a blessing.

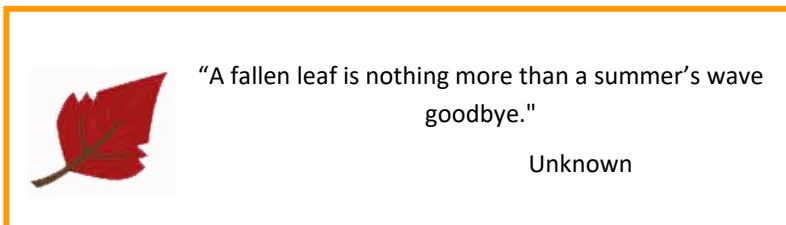


Community members gathered to share memories of Hank Kvintus.

Keri Soukup

Read more about the municipal campus updates here

<https://www.roselle.il.us/899/Petal-Plaza-Porch-and-Promenade>



Thanks to MASTERTECH Garage for being a leading business supporter of the Roselle History Museum

From the Museum Manager's Desk

As we move into Fall, I would like to take a minute to count our blessings. We were very fortunate, this summer, to have Tess Binder of Schaumburg with us as a museum apprentice.



She was of immense help with exhibits. Her vision and expertise made exhibit creation and curation a thing of beauty! We hope Tess will be back on her winter break to work more of her magic! Thank you, Tess!

We are also grateful for our longtime volunteers Philip and Jason Sullivan. Their vision and expertise were essential in creating an Indigenous Peoples exhibit.

Please visit us to see this – it will remain up through Christmas for your enjoyment. Thank you, Philip, and Jason!

Also, please welcome our newest volunteer, Dylan Hanzel. Dylan has had family in Roselle since the 1970's. He brings with him many talents, such as exhibit help, office expertise and an enthusiasm for history that is catching! Welcome in and thank you Dylan!

We are still looking for gardeners and docents – so if you love to garden, we have expansive grounds that would love to be under your care. There are three larger gardens and two smaller gardens. We are also in need of docents once a week on Sundays from 2-4pm. Please let us know if you would like to volunteer by

Email: museummanager@rosellehistory.org

WANTED: Old family and heirloom recipes!

Do you have any recipes that you would like to share? Perhaps recipes that were passed down through your family or those you look forward to at family gatherings.

Then you are just the person we are looking for!

For more information, or to submit a recipe, please contact Leslie Drewitz – by phone, (630) 351-5300 or

email museummanager@rosellehistory.org.



Speaking of Gardens... We have just dedicated a beautiful Memorial Garden to a longtime RHM Friend, Director and Gardener, Hank Kvintus. We would like to thank Anthony Johnson of Scout Troop 98 and his vision for a beautiful tribute to Hank.

Be on the lookout in the new year for our annual "Beginning Genealogy class" and our "Antique Appraisal Event." Look for updates in our Winter newsletter.

Are you interested in Genealogy? Do you have a brick wall that you just cannot break through? We have two genealogists on hand the first Thursday of every month from 10:30 to 12:30 to help you over those brick walls.

Please email:
museummanager@rosellehistory.org
for more information.

Remember to stay curious!

Leslie

The first Polonia Day Fundraiser takes place September 29, 2024, 1PM-5PM at Montrose Market Parking Lot, 550 Lake Street in Roselle.

Roselle Sister Cities Association- Polish Committee (RSCAPC) have served local communities in the Roselle area for over 20 years. This year, we are hosting **First Polonia Day** featuring polish food, polish beer, entertainment for adults and kids including bouncy house, music, face painting, balloon artist and more. Here is a link to our website with more information about the event –

<https://rosellesistercities.org/events/polonia-day/>

We hope you will be able to join our **501c (3) non-profit organization** in celebrating this milestone to help us continue our work.

Please Contact:

Joanna Barkowska

773 704 5850

Roselle Sister Cities

Association Polish Committee

<https://rosellesistercities.org/>

<https://www.facebook.com/>





"Honey Do" hard at work!

We at The Roselle History Museum at 102 S Prospect in downtown Roselle had an fantastic time at both our Springtime and our Summer sessions of our Volunteer Work Camps H.D (Honey Do) where a half dozen or more motivated local Roselle high school students gathered for team building, comradery, skill building, community and fun volunteering on small projects for a couple hours on a Saturday at our Museum Campus. We will be working on some small painting projects, organizing cabinets light cleaning, gardening and upcoming holiday decorating..

Our fall section is about to begin soon. Come join us on September 21. All skill levels and any age are encouraged to join others along with their friends. Sessions fill up fast!

To signup, please contact the Museum at 630-351-5300.



What I remember most about high school is the memories I made with my friends



WELCOME Class of 1974
Reunion from Lake Park
High School,
Saturday September 14



"Harmless Drudges: The Unexpected Revolution That Is Reference Material"

It is odd to think that someone wrote the dictionary. Or the encyclopedia, for that matter. While these efforts are collaborative, it still seems strange to think that there were, and are, individuals sitting down and writing them. From today's perspective, the act seems mundane since we are so used to the idea of these works. Thinking about them further, however, makes it clear that these were revolutionary ideas. Prior to the Enlightenment period, and especially prior to the invention of movable type, books like these would not have been necessary or even viable. Differences in dialect would make it so that a person would often not be able to communicate with a person who lived a few dozen miles away. In that scenario, what good would a dictionary be? As for an encyclopedia, what would a plowman need to know about the economy of a city 500 miles away?

With the advent of movable type and the Enlightenment emphasis on the importance of knowledge, suddenly these books not only became possible but incredibly useful. This meant that the earliest versions, while crude by our standards, were revolutionary enough to make their creators famous in their day and at least recognizable today, even if you are not sure why you know the name. Denis Diderot, leader of the effort to produce one of the first encyclopedias, aroused both admiration and controversy for his efforts to produce the work. Suspicious authorities even raided his home at several points during the process for fear that he was producing sedition.

Even more fascinating was the work of Samuel Johnson. Johnson, collaborating with a small team, finished the first widely accepted English dictionary in roughly eight years. Noting that a team of 40 French writers were working on a French dictionary at the same time and expected to take 40 years, Johnson noted that this reflected the relative ability of an Englishman to a Frenchman. One of

Johnson's main contributions was that his dictionary included the use of literary references to illustrate the definition of a word. Johnson's dictionary also showed an academic rigor that previous dictionaries generally lacked as he tried to cover all the possible meanings of a word. The entry for "put" ran to three pages long and the one for "take" ran to five pages.

Despite this, Johnson's personality is evident throughout, to the work's benefit and its detriment. Since the field of etymology was in its infancy, some of his definitions and their origins relied on guess work. When questioned on how he came to define a certain word, he admitted that he found the definition in pure ignorance. Additionally, some of the entries take on what would be seen as a whimsical tone today. Oats is defined as "a grain which in England is generally given to horses, but in Scotland supports the people." A lexicographer was defined in part as a "harmless drudge."

Perhaps the most shocking thing about Johnson's fame is that he became so famous that his biographer became famous in his own right. James Boswell's main claim to fame is that he was Johnson's friend. While he wrote feverishly throughout his life, the only two things he wrote that gained any notice were a travel memoir of a trip he took with Johnson and the biography of Johnson. After his death, the letters he exchanged with Johnson were read by scholars. Aside from that, he was the butt of jokes throughout his life and since. Johnson's other friends openly mocked this strange nobleman, and scholars have since include stories about him as humorous asides during works examining more serious topics. Boswell saw himself as a distinguished philosophe, a highly respected intellectual and a sought-after lothario. Others have seen him as an intellectual lightweight whose romantic "conquests" were of a pecuniary nature. All of this shows how wildly popular and revolutionary the dictionary was seen as, however. Unlike other would-be philosophe's, Boswell happened to be friends with the man who wrote the dictionary. It is remarkable to think we are still talking about him two and a half centuries later on the strength of that.

Roselle History Museum Newsletter

39 E. Elm St

Roselle, IL 60172

Newsletter generously sponsored by



Itasca Bank & Trust Co.

Together we'll shape the future

"Autumn shows us how beautiful it is to let things go." Unknown



Summer House

Mission Statement

To maintain and enhance a historically accurate museum with primary focus on Roselle and surrounding areas
To collect local facts and artifacts of today that will be part of our village history and pride tomorrow.
To provide a dynamic historical and educational resource for our residents and visitors.

Board of Directors & Staff

President: Glenn Spachman
Vice-President: Tim Grasso
Treasurer: Jeff Engel
Secretary: Mickey Molnaire

Museum Mgr: Leslie Drewitz
Marketing Mgr: Keri Soukup
Village Board Liaisons:
Wayne Domke,
Tom Piorkowski

Board Members:
John Binneboese
Walter Lotz
Janice Wood

Friends of the Museum
Mary Beahan, Peggy Ott,
and Michael Drewitz

General Meetings

Second Saturday of the Month
10-11:30 am - 39 E. Elm St.

Museum Hours

Sundays: 2-4 pm
Wednesday through Saturday
10 am - 2 pm, by appt

Editor: Janice Wood
editor@rosellehistory.org

CONTRIBUTION FORM

Mail to: Roselle History Museum, 39 E. Elm St., Roselle, IL 60172

Name _____ Phone _____
Address _____ City _____
Email Address _____ State/Zip _____
Circle one: \$30 \$50* \$100 \$250 Other \$ _____

TWO NEW WAYS TO SEND YOUR CONTRIBUTION VIA PAYPAL

- 1) Scan the QR Code at the right to donate
- 2) Go to <https://tinyurl.com/PayPalRHM>



_____ *My contribution is at least \$50. Please send me a free copy of the "Remembering Roselle" history book.
The Roselle Historical Foundation is a 501(c)(3) corporation. Your contribution may be fully tax deductible